

Schenectady City School District

Mosaic Associates Architects

Callie Gaspary, AIA Kersten Lorcher, AIA

Hamlin Design Group

Shawn Hamlin, AIA

Turner Construction

Larry Tune

19 November, 2014



CAPITAL PROJECT UPDATE | Outline

- Group A Projects Status Update:
SCLA & Keane ES
- Group B Projects Status Update:
Mont Pleasant Middle School
Oneida Middle School
Central Park Middle School
Paige ES
Pleasant Valley ES
- Group C Projects Status Update:
Howe Elementary
Van Corlaer Elementary
- Schematic Design (SD) Update – CPMS
- Next Steps:
Critical & Milestone Dates





CAPITAL PROJECT | Group A

- SCLA BOILER RECONSTRUCTION

- Temporary Boiler Removed
- New Boiler Plant Operational
- New Domestic Hot Water System operational
- Gas & Carbon Monoxide alarms tied into Fire alarm
- Interior doors, lighting & painting are complete
- New slab, egress stairs & railings are complete
- Project is 85% complete
- Misc Finishes, Punchlist, training, turnover & closeout remains.





CAPITAL PROJECT | Group A

- SCLA – Before.



- SCLA – After.





CAPITAL PROJECT | Group A

- KEANE BOILER RM RECONSTRUCTION
 - New Boiler Plant Operational
 - New Domestic Hot Water System operational
 - Gas & Carbon Monoxide alarms tied into Fire alarm
 - Interior & exterior doors, lighting & painting are complete
 - Punchlist, training & turnover are complete
 - Certificate of Completion Received from City
 - Project is 95% complete
 - Fiscal closeout remains





CAPITAL PROJECT | Group A

- Keane – Before.



- Keane – After.





CAPITAL PROJECT | Group B

- Mont Pleasant MS and Oneida MS Design Development cost estimate on track for final budget. Construction Documents in progress.
- Central Park MS Schematic Design in progress.
- Designs based upon:
 - Long Range Master Plan
 - Ed Spec
 - Building Administrator Comments
 - Building Advisory Committees (BAC)
- Paige ES - approved by SED.
- Pleasant Valley ES – boiler replacement to SED by end of Nov.





CAPITAL PROJECT | Group C

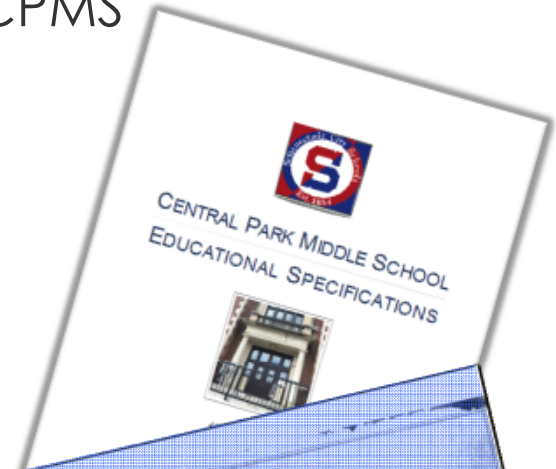
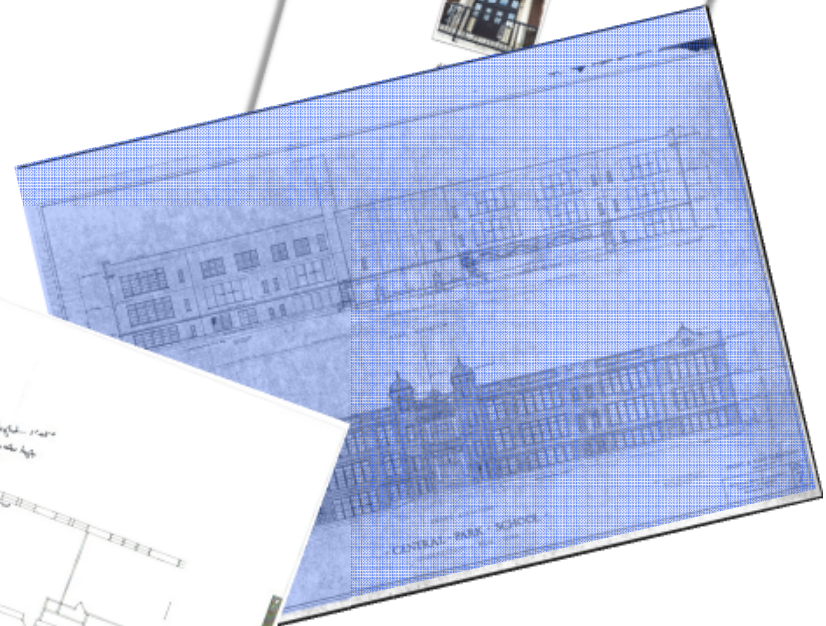
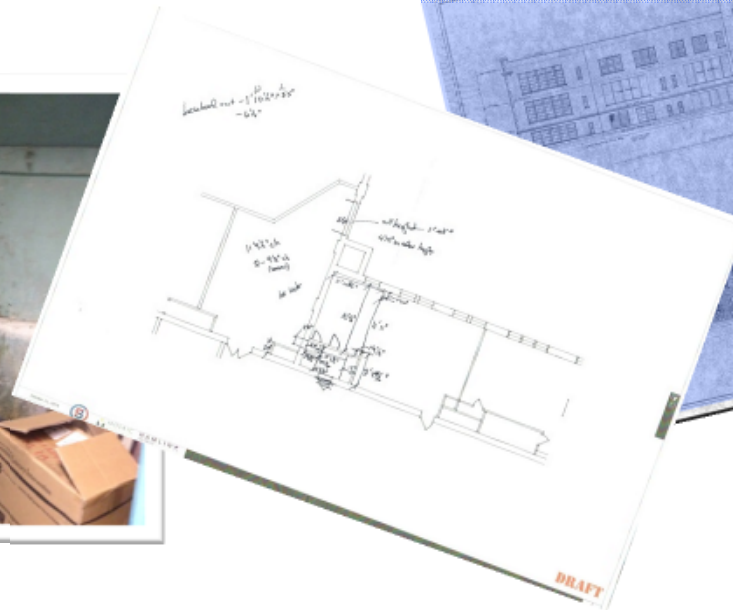
- Elementary Ed Spec meeting took place in August. Report is in progress.
- Van Corlaer - First Ed Spec session has taken place. Draft Ed Spec in progress. Additional meetings being scheduled.
- Howe ES Building Advisory Committee (BAC) convening Winter 2014/15.





SCHEMATIC DESIGN UPDATE | CPMS

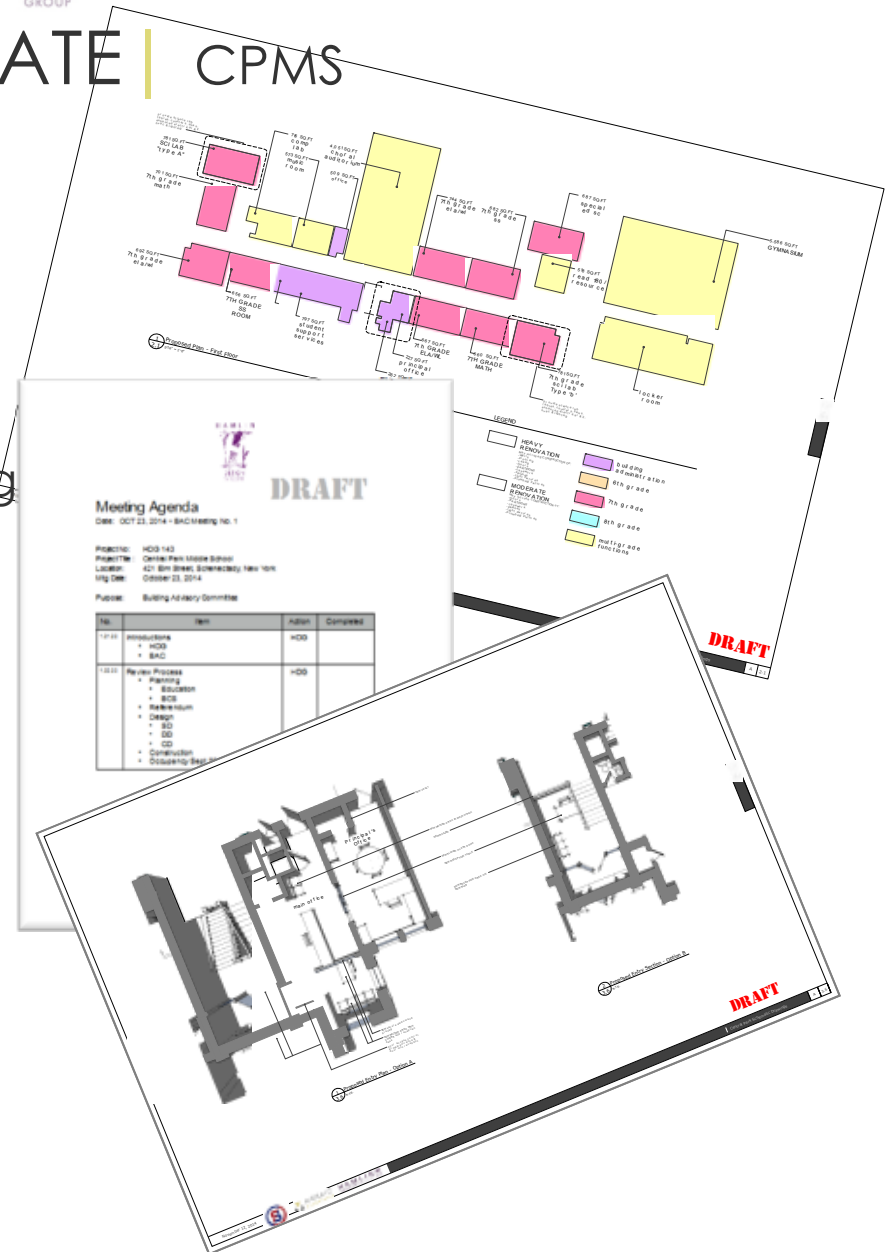
- Building Ed Spec Meeting
- Collected and Cataloging of Drawings
- Evaluation of Existing Conditions





SCHEMATIC DESIGN UPDATE | CPMS

- Schematic Development
- Review with Administration
- Building Advisory Committee Meeting
 - Principals
 - Teachers
 - Custodians
 - Parents
- Schematic Design Development
- Schematic Report is Completed sent Turner to be estimated.





CAPITAL PROJECT UPDATE | Next Steps & Milestones

- Ongoing Periodic Capital Project Updates to Board of Education.
- December 2014 Finish Steinmetz boiler.
- January, 2015 Submit Mont Pleasant MS & Oneida MS projects to SED.
- March 2015 Bid Period for Mont Pleasant MS, Oneida MS & Paige ES Projects.
- Summer 2015 Reconstruct Paige ES roof.
- September 1, 2016 Reopen Oneida Middle School ; Open Mt Pleasant MS & Central Park MS with 6th, 7th & 8th Grades.



THANK YOU | Any Questions?

